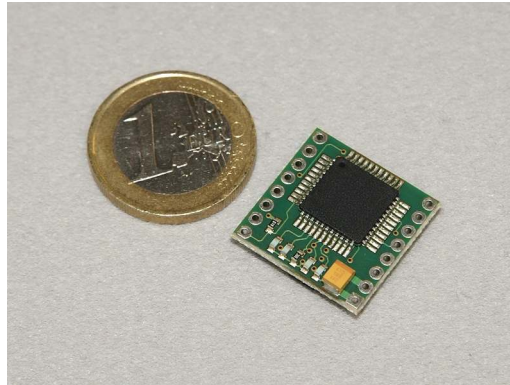


Nano reader module 5 Volt



Elatec's nano reader module is designed for integration into machines, handheld computer or any other device. Especially the focus is set on size, price and flexibility.

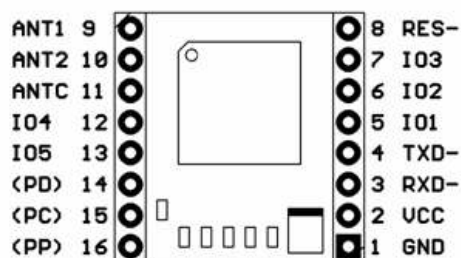
Thanks to it's compact dimensions an integration directly on a PC board is possible.

Unique features are 5 (five) free configurable ports (to be configured as input or output), die possibility of external triggering and the quantity of different types of transponders that can be read with this reader.

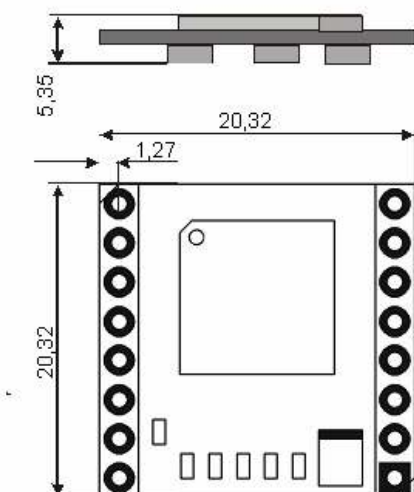
Technical data

Housing	Without
Frequency	125 KHz +/- 0,5%
Dimensions (L x W x H)	20,32 x 20,32 x 5,35 mm
Power supply	+5 V DC +/- 5%
Current input	HF field off: 15mA HF field on: max 75mA, depends on antenna
Temperature range	-20°C up to +60°C (-4°F up to +140°F)
Antenna	To be connected externally (490 µH)
Read- / write distance	Proximity, depending on antenna
Transponders supported	<ul style="list-style-type: none"> EM4102, UNIQUE (read only) HITAG-1, HITAG-2, HITAG-S32, HITAG-S256, HITAG-S2048 (all without krypto mode) EM4150, TITAN EM4105, ZOODIAC (read only) Q5, T5557
Technical certificates	CE
Weight	Approx. 20g
Order code	AXA050

Schematically picture (from above)



Dimensions



All dimensions approximately and in mm.
Raster unit 2,52 mm.

Pinning

Pin	Name	Description
1	GND	Ground
2	VCC	+5V +/- 5%, max. 75mA
3	RxD-	Data input, TTL-Level (low active)
4	TxD-	Data output, TTL-Level (low active)
5...7	IO1 IO2 IO3	Free programmable I/O, e.g. for LEDs or loudspeakers
8	RES-	RESET (low active)
9	ANT1	Antenna connector
10	ANT2	Antenna connector
11	ANTC	Trimming capacitor for antenna; (second pin is ANT1)
12...13	IO4 IO5	Free programmable I/O, e.g. for LEDs or loudspeakers
14...16	PD PC PP	for internal use

Elatec reserves the right to change any information or data in this document without prior notice. The distribution and the update of this document is not controlled. Elatec declines all responsibility for the use of product with any other specifications but the ones mentioned above. Any additional requirement for a specific customer application has to be validated by the customer himself at his own responsibility. Where application information is given, it is only advisory and does not form part of the specification.

Elatec GmbH, Identification Systems
Max-Planck-Str. 16, D-82223 Eichenau, GERMANY
Phone: +49 8141 53498-0
Fax: +49 8141 53498-29
RFID@elatec.de

Elatec Vertriebs GmbH
Hans-Pinsel-Str. 10b, D-85540 Haar, GERMANY
Phone: +49 89 46 23 070 ;
Fax: +49 89 460 24 03
info@elatec.de