

ELATEC

RFID Systems

SECURE PRINTING APPLICATIONS



DATA SECURITY. TRANSPARENCY. CONVENIENCE.

elatec.com

TAKE CONTROL OF INFORMATION SECURITY.

Protecting sensitive information is critical for every organization. How can you control access to both printed documents and digital data—without slowing your people down?

Authentication solutions using Radio-Frequency Identification (RFID) or mobile Bluetooth® Low Energy (BLE) or Near-Field Communication (NFC) simplify secure printing. Employees no longer need to enter passwords and PINs to unlock print jobs—just wave the card or phone. Only authorized users can pick up the print job, so information is protected. And cost allocation is easy, too—you always know exactly who has picked up a print job and when. Best of all? The same card or mobile credential can unlock access to everything else in the office, from single sign-on (SSO) to computer systems to access to elevators, vending machines and more.

ELATEC is the only RFID reader/writer manufacturer who can work with all major printer manufacturers and print management software providers worldwide. That means seamless integration, streamlined inventory management, and no need for compatibility checks—triple win!

Any printer. Any solution.
Any RFID or BLE/NFC technology.



HOW YOU BENEFIT



SECURITY

RFID cards and BLE/NFC credentials are more secure and easier to manage than passwords and PINs, and cannot be easily faked, duplicated or hacked. In addition, you can set extra security technology parameters when configuring the reader.



TIME SAVINGS

Eliminate long lines at the printer and improve employee productivity. No PINs, no passwords, and no need to sift through a pile of printouts to find yours. Just wave a card or smartphone at the reader and take your printouts.



CONVENIENCE

Using RFID or mobile authentication is foolproof. Employees simply use their ID cards, fobs or smartphones to start the print job. And they won't have to remember any extra PINs or passwords.



COST SAVINGS

Employees can easily register their cards, fobs or smartphone credentials themselves, so IT no longer has to deal with user management or tracking. And the authentication technology provides easy and seamless cost tracking, transparency and control.



SUSTAINABILITY

Better tracking and control of printer use saves paper, energy and printer toner, cutting costs and your carbon footprint. And ELATEC readers are long-lasting and future-proof. With easy remote updates and upgrades, there's no need for a new reader.

ONLY FROM ELATEC

Our powerful combination of authentication products, software and service is unmatched in the industry.



SERVICE

The world's best authentication solutions come with the world's best service. Our team is with you all the way with expert advice and hands-on help, from needs analysis and product selection to implementation and postsale support.

PRE-SALES CONSULTING

Needs analysis and individual consulting to help you make the best product and configuration decisions.

ONGOING SERVICE & SUPPORT

We are here to support you after the sale with advice, optimization and reconfiguration or updates – often remotely!

IMPLEMENTATION & DEVELOPMENT SUPPORT

We'll take care of the hardware and software integration, application development, configuration, and all modifications.

ELATEC ACADEMY

Extend your authentication knowledge from anywhere. We offer basic and advanced virtual courses and customized webinars.



SOFTWARE

Our software solutions help you get the most out of your reader/writer. Our Software Development Kit lets you configure your reader for your precise security standards, communication protocols and IT infrastructure with easy-to-use software tools.

PRE-SALES CONSULTING

Needs analysis and individual consulting to help you make the best product and configuration decisions.

ELATEC MOBILE BADGE BLE NFC

This free customizable app offers simple and effective components for building modern mobile systems or extending existing systems with mobile solutions.

POWERFUL SOFTWARE DEVELOPMENT KIT

Our powerful, easy-to-use DevPack lets you modify the configuration of our products to support custom functionality. With its closed ecosystem and secure End2End communication via encrypted keyboard emulation, it is a highly secure development solution.



We offer simple, secure and versatile product solutions for secure printing, single sign-on (SSO), and a broad range of other authentication applications, along with the knowledge and support to implement them. And we'll be with you every step of the way to help you customize and optimize your application. We help you solve your unique challenges with solutions that are: **Secure and powerful. Universal and reliable. Flexible and future-proof.**



PRODUCTS

Find the optimal reader for every secure printing project. We offer single- and multi-frequency readers/writers in many configurations. We can also customize a solution for your authentication application – no other reader on the market offers more options or can be customized so quickly!



TWN4 MULTITECH 2 DESKTOP READER

This all-in-one proximity reader can be connected through UART, USB and Ethernet. Available as PCB and with Desktop housing.



TWN4 USB FRONT READER

Flexible, convenient and cost-effective reader which can be easily connected to an external USB port.



TWN4 SLIM

Extremely slim and small full TWN4 reader for stand-alone operation, printer integration and industry applications as well.



TECHTRACER LITE

The must-have tool to determine any RFID transponder technology immediately.



TWN4 CONFIG PROGRAMMER KIT

Enables the user to change the configuration of a card reader wirelessly in a matter of seconds using a configuration card.



YOUR BUSINESS. YOUR GOALS. YOUR AUTHENTICATION SOLUTION.

Why should you implement an authentication solution with ELATEC?

We can tell you what we think—but what matters is what we can do for you.
Here's what our customers and business partners are saying.



ndd**Print**

Flexibility, Familiarity, Reliability and Rapidity are a few of the reasons why NddPrint has been forging a strong business relationship with ELATEC for the past three years.

RICHARD SCHULZE
CEO, NddPrint Europe

IDVATION

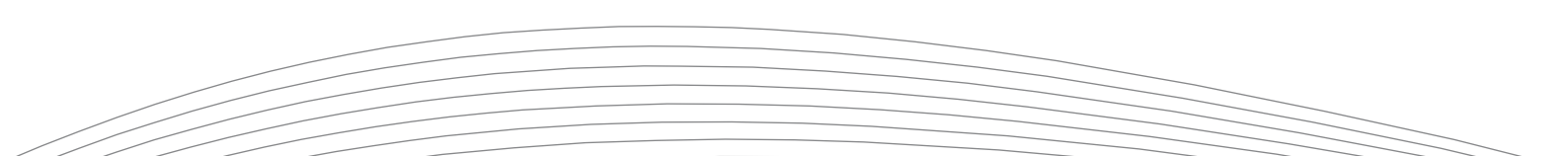
With ELATEC there is a reliable Made-in-Germany player on the market. ELATEC drives the exchange from insecure transponder technologies to secure solutions within only a swipe of a card.

JONAS LENZ
CEO, idVation GmbH

core|rfid[™]

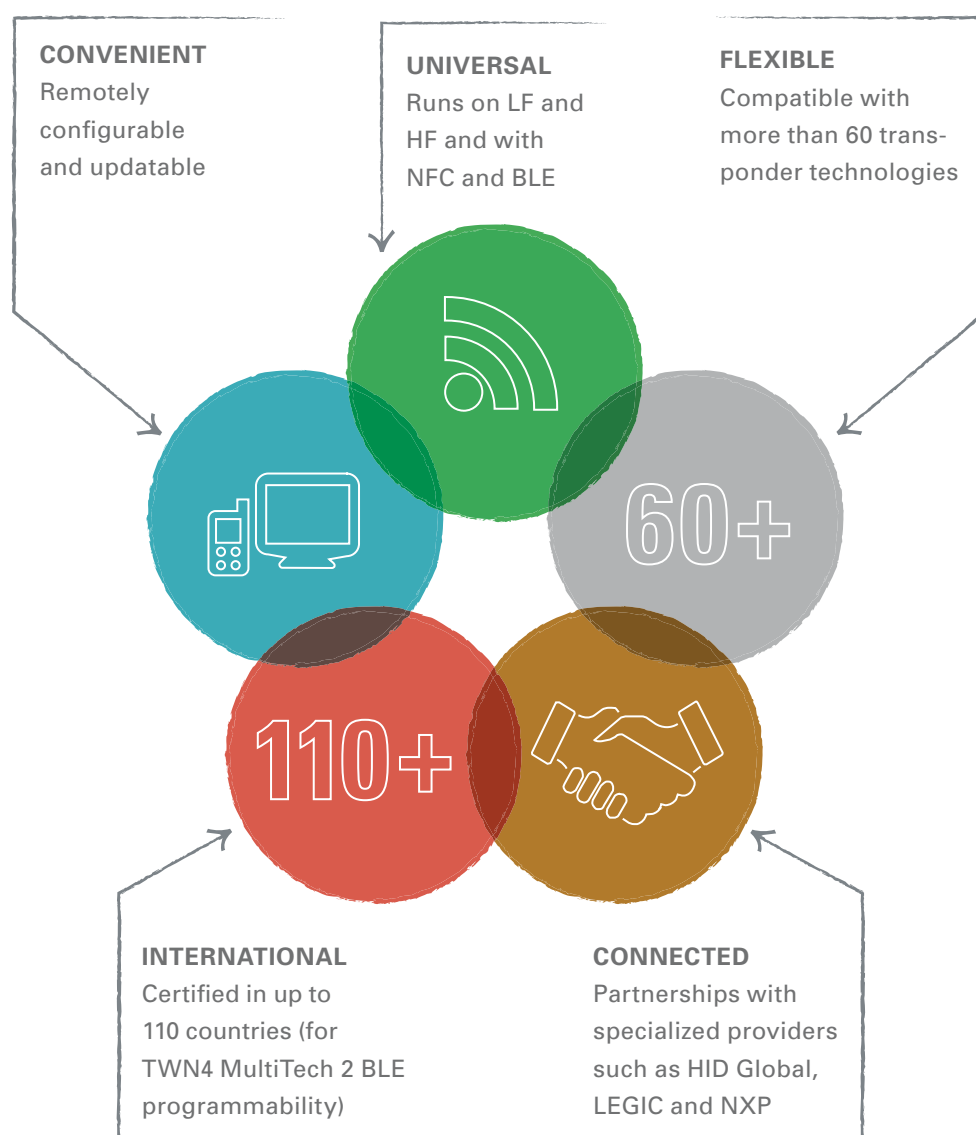
We never hesitate to recommend ELATEC's superior RFID technology and exceptional technical support. We've developed it to a wide range of customers in highly varied applications.

RICHARD HARRISON
Technical Sales Director, CoreRFID



YOUR BENEFITS AT A GLANCE

We offer secure and flexible solutions for any type of authentication or authorization you might need for your business.



ENABLING **EASY** AND **SECURE ACCESS** TO THE EVOLVING **DIGITAL WORLD**

From secure printing to single sign-on to access control, ELATEC is helping organizations implement new business models, enhance productivity and maximize security through innovative user identification and authentication solutions. With our unique solution package of product, software and service, digital transformation has never been so easy.

AUTHENTICATION—YOUR WAY.

ELATEC's authentication solutions are built around you, for today and for tomorrow. Our innovative, versatile short-range wireless readers/writers let you design a solution that is right for you—whether via RFID, mobile credentials using BLE/NFC, or complex multi-factor security solutions. When you work with ELATEC, you are working with a reliable long-term partner who can help you select the best products, processes and services for your organization.

PARTNERSHIP. QUALITY. SERVICE.

EMEA

ELATEC GmbH
Puchheim, Germany
+ 49 89 552 9961 0
sales-rfid@elatec.com

ASIA PACIFIC

ELATEC Technology
Shenzhen, China
+ 86 755 23946014
apac-info@elatec.com

AMERICAS

ELATEC Inc.
Palm City, Florida, USA
+ 1 772 210 2263
americas-info@elatec.com

ELATEC Systems GmbH
Ludwigsburg, Germany
+ 49 7141 3097360
info-systems@elatec.com

JAPAN

ELATEC Japan
Tokyo, Japan
+ 81 90 1846 6900
japan-info@elatec.com
